

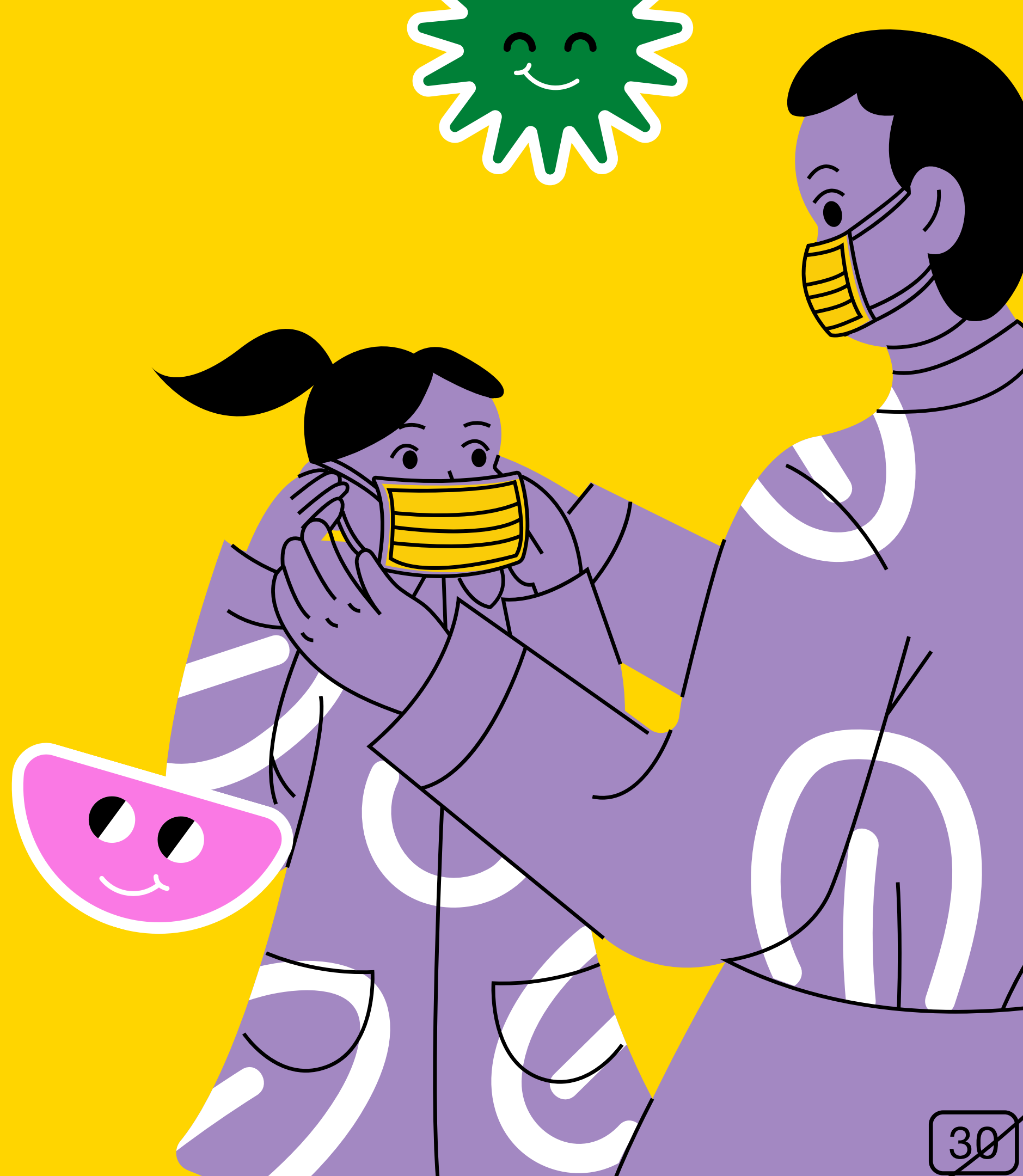
# Changes in daily routine schedules



- Adjustments to procedures and routines have been made to ensure that social distancing is adhered to at all time during the school day
- A typical day in Kindergarten will have four learning activities of 45 minutes each, with breaks in between the learning activity slots on-campus and one asynchronous learning activity through Seesaw. The day will commence with the morning huddle and end with the afternoon huddle of 15 minutes each for every bubble each day
- Sufficient soap will be provided in every toilet and 'hand washing' breaks have been timetabled into the day as well as whenever necessary (e.g. after using the toilet)
- There will be a combination of the core subjects with some co-scholastic subjects like Arts, IT & P.E. on campus and UAE SST, MEP, P.E., Music and Drama through Seesaw (asynchronous)
- STEAM has been discontinued as we don't prefer children sharing the resources given the situation
- The number of slots for English, Math, EVS and Reading has been increased in the on-campus timetable keeping in mind the blended learning and provision of more time for children to consolidate the concepts learnt
- Children will be appropriately supervised all through the day, even during the break times
- Students of Determination will be appropriately monitored and supervised to ensure physical distancing for the safety of themselves and others

**The Physical Education sessions will be conducted in the class (on-campus) as well as online asynchronously.**

**Outline for  
emergency  
procedures in case  
of a suspected or  
confirmed Covid - 19  
case**



The school has established a Response Team to manage and report any COVID-19 related incidents.

Quarantine spaces have been identified in each of the buildings and is prepared for isolating students who develop COVID-19 symptoms. The school has identified the nearest hospital (New Medical Centre) to consult medical experts.

### **Protocol for student displaying symptoms**

#### **If a student displays symptoms:**

- The Teacher will inform the Supervisor of the grade immediately
- The Supervisor will send the students to the isolation room in the same block and will ensure that the students keeps 2 m distance from anyone they pass and they not to touch anything
- The Supervisor will inform the Nurse and Health and Safety Officer
- The Nurse will call the parent/guardian so they can arrange for the student to be picked up

**School support for the well being of the students with suspected or confirmed COVID - 19 from their onset of symptoms through their period of isolation and eventual return to school**



# Overview

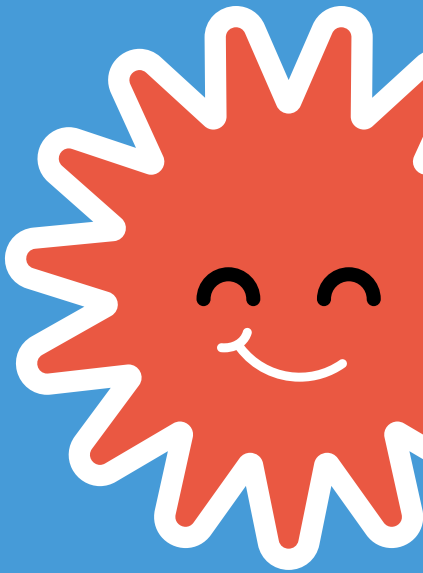
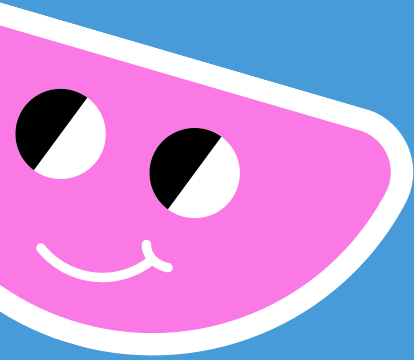
The Counsellor and Wellbeing Champions of the school will be responsible to take care of the wellbeing of staff and students.

School will follow the staff and student wellbeing plan in case of any suspected or confirmed COVID – 19 case based on their individual risk assessment.

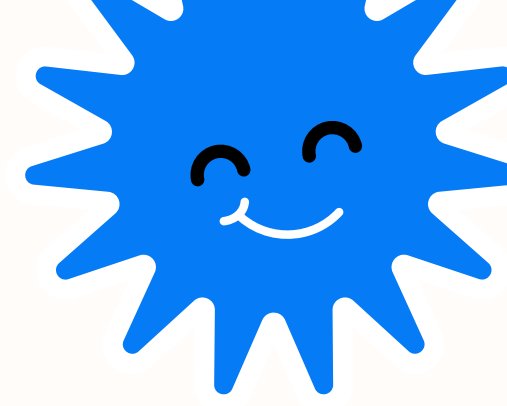
Adequate training and awareness campaigns concerning COVID-19 to staff, students and parents will be provided to tackle emotional wellbeing requirements of any individual detected with COVID – 19.

Regular interventions focusing on mental and physical health of all staff will be a regular feature by the School Counsellor.

The School will maintain privacy and confidentiality of the suspected or confirmed cases within the school community.

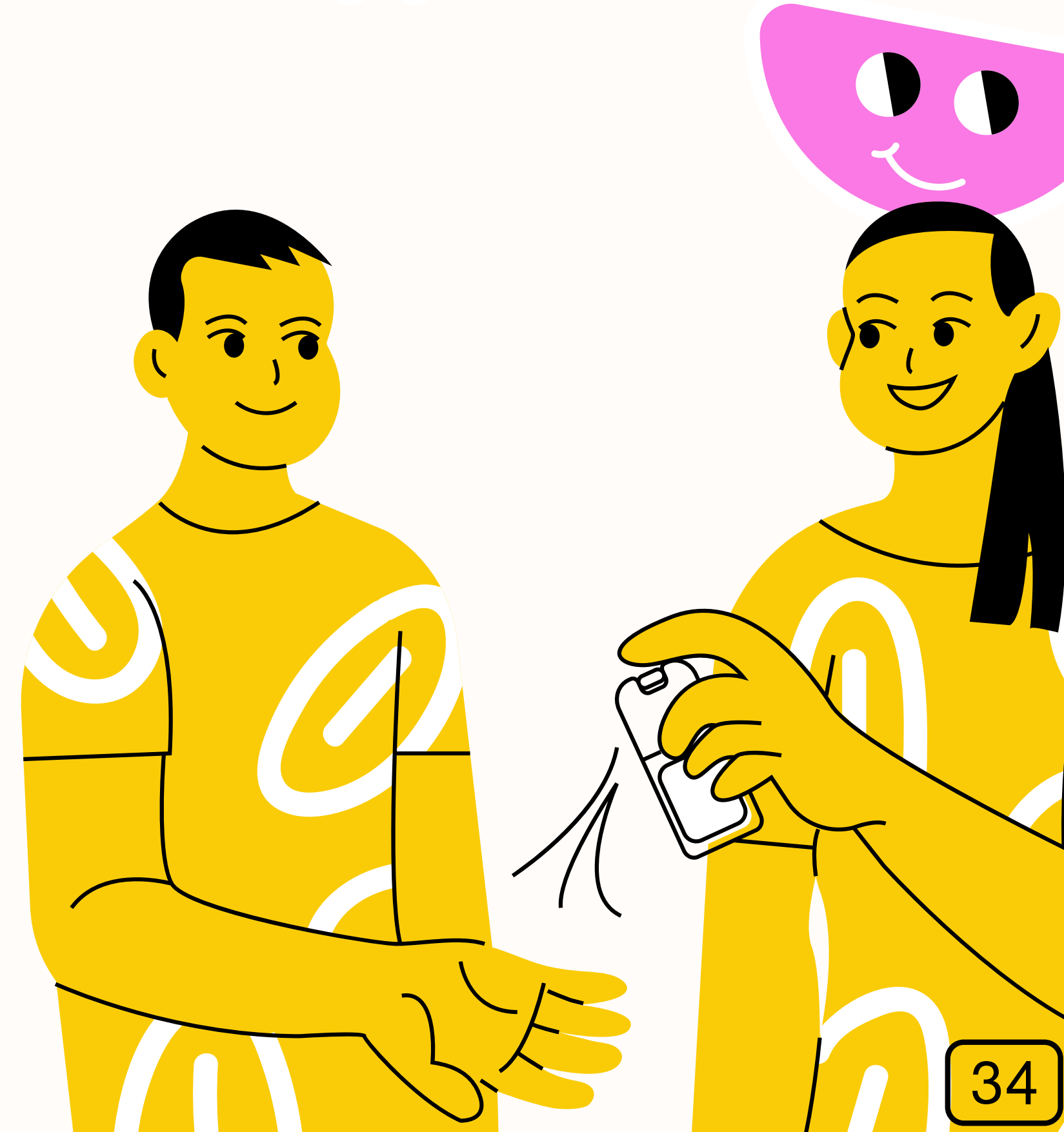






## Wellbeing initiative on onset of symptoms

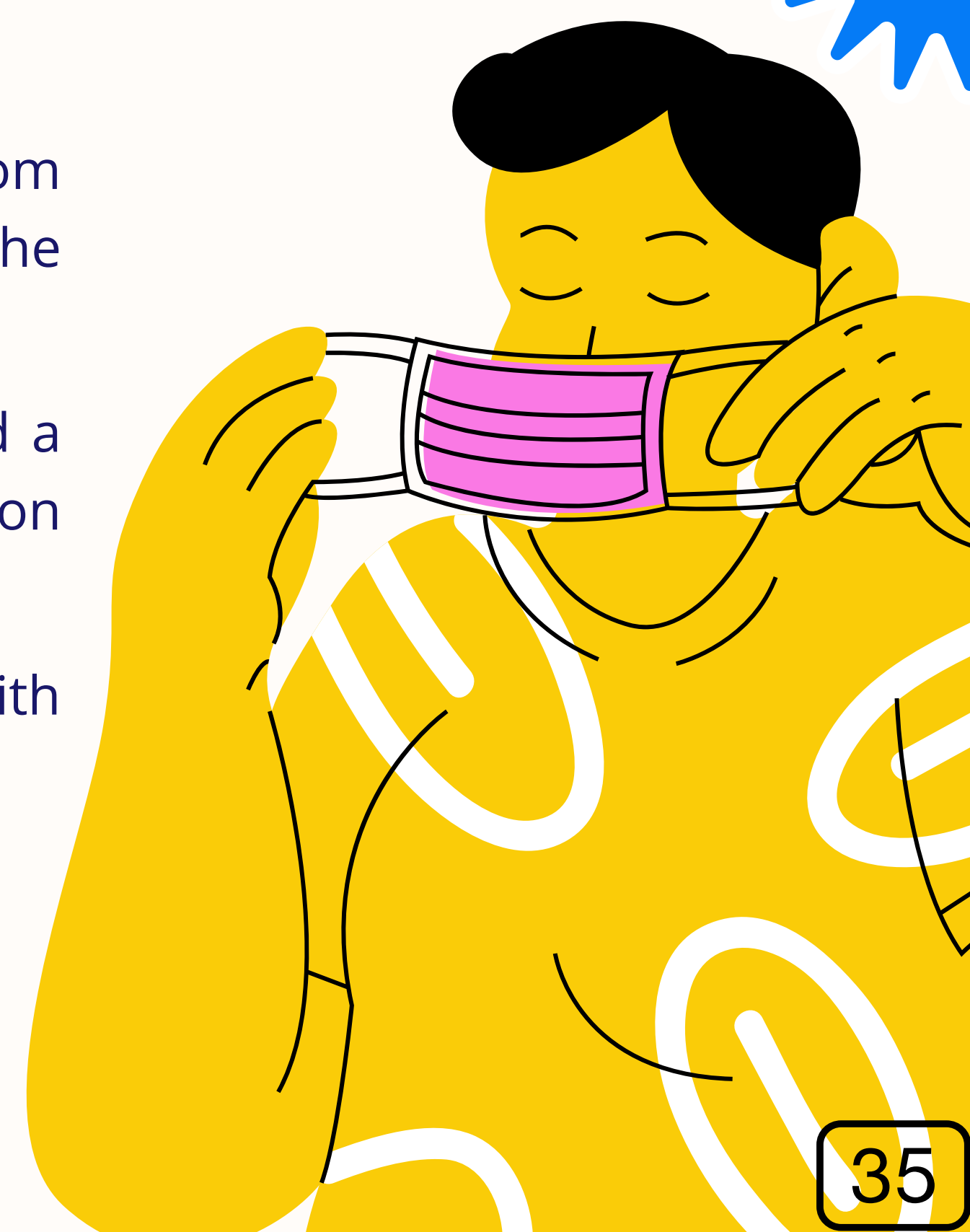
- The Counsellor will connect virtually with the individual to deal with any anxiety issues
- School Nurse and Doctor will follow up with the individual for medical guidance associated with coronavirus
- School will provide an assurance to students for maintaining the continuity of their education





## Wellbeing initiative through the period of isolation

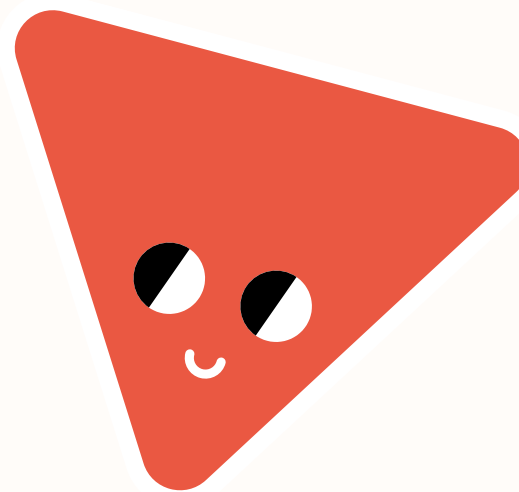
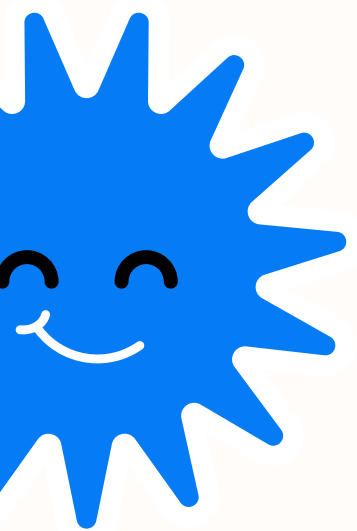
- Education will continue to be provided with personal attention from the teacher via digital learning platform with flexible options for the student suffering with COVID-19
- The range of special educational needs is immensely diverse and a plan will be put in place to review the IEP of every child based on their evaluation of any student of determination
- The wellbeing team and the school Doctor will regularly connect with the individual to provide any emotional support that is required
- Medical consultation will be provided by the school Doctor





## Wellbeing initiative on eventual return to school

- We will ensure that all students and staff adhere to the Non-Stigmatization Policy
- Counsellor interventions will be provided for individuals returning to school after experiencing confinement and social isolation to cope with mental health issues





## Tuition fees

Full tuition fees will apply to students, regardless of the mode of attendance and reopening model followed by the school

# KINDERGARTEN

ON-CAMPUS - FACE -TO - FACE

7.20 AM - ARRIVAL

12:00 PM - DEPARTURE

TIME	DURATION	ACTIVITY
7.30 am - 7.45 am	15 minutes	Morning Huddle
7.45 am - 8.30 am	45 minutes	Learning Activity 1
8.30 am - 8.45 am	15 minutes	Sanitization Break
8.45 am - 9.30 am	45 minutes	Learning Activity 2
9.30 am - 9.50 am	20 minutes	Snack Break
9.50 am - 10.35 am	45 minutes	Learning Activity 3
10.35 am - 10.45 am	10 minutes	Sanitization Break
10.45 am - 11.30 am	45 minutes	Learning Activity 4
11.30 am - 11.45 am	15 minutes	Afternoon Huddle

**Asynchronous Learning – 30 min - 3 Days in a Week**

# TA'S SEES I AND II

ON-CAMPUS - FACE -TO - FACE

7.20 AM - ARRIVAL

12:00 PM - DEPARTURE

TIME	DURATION	ACTIVITY
7.30 am - 7.45 am	15 minutes	Morning Huddle
7.45 am - 8.30 am	45 minutes	Learning Activity 1
8.30 am - 8.45 am	15 minutes	Sanitization Break
8.45 am - 9.30 am	45 minutes	Learning Activity 2
9.30 am - 9.50 am	20 minutes	Snack Break
9.50 am - 10.35 am	45 minutes	Learning Activity 3
10.35 am - 10.45 am	10 minutes	Sanitization Break
10.45 am - 11.30 am	45 minutes	Learning Activity 4
11.30 am - 11.45 am	15 minutes	Afternoon Huddle

**Synchronous Distance Learning - 2 Days in a Week (@ home via TEAMS)**

2:15 pm - 3:00 pm - 45 minutes - Learning Activity 5

3:00 pm - 3:15 pm - 15 minutes - Screen Break

3:15 pm - 4:00 pm - 45 minutes - Learning Activity 6

**Asynchronous Learning - 30 min - 3 Days in a Week (@ home via Teams Recordings)**

# TA'S EES III AND VII

ON-CAMPUS - FACE -TO - FACE

7.20 AM - ARRIVAL

12:00 PM - DEPARTURE

TIME	DURATION	ACTIVITY
7.30 am - 7.45 am	15 minutes	Morning Huddle
7.45 am - 8.30 am	45 minutes	Learning Activity 1
8.30 am - 8.45 am	15 minutes	Sanitization Break
8.45 am - 9.30 am	45 minutes	Learning Activity 2
9.30 am - 9.50 am	20 minutes	Snack Break
9.50 am - 10.35 am	45 minutes	Learning Activity 3
10.35 am - 10.45 am	10 minutes	Sanitization Break
10.45 am - 11.30 am	45 minutes	Learning Activity 4
11.30 am - 11.45 am	15 minutes	Afternoon Huddle

**Synchronous Distance Learning - 4 Days in a Week (@ home via TEAMS)**

**2:15 pm - 3:00 pm - 45 minutes - Learning Activity 5**

**3:00 pm - 3:15 pm - 15 minutes - Screen Break**

**3:15 pm - 4:00 pm - 45 minutes - Learning Activity 6**

**Asynchronous Learning - 30 min - 3 Days in a Week (@ home via Teams Recordings)**

# KINDERGARTEN

ON-CAMPUS - DISTANCE LEARNING

7.20 AM - LOG IN

12:00 PM - LOG OUT

TIME	DURATION	ACTIVITY
7.30 am - 7.45 am	15 minutes	Morning Huddle
7.45 am - 8.30 am	45 minutes	Learning Activity 1
8.30 am - 8.45 am	15 minutes	Sanitization Break
8.45 am - 9.30 am	45 minutes	Learning Activity 2
9.30 am - 9.50 am	20 minutes	Snack Break
9.50 am - 10.35 am	45 minutes	Learning Activity 3
10.35 am - 10.45 am	10 minutes	Sanitization Break
10.45 am - 11.30 am	45 minutes	Learning Activity 4
11.30 am - 11.45 am	15 minutes	Afternoon Huddle

**Asynchronous Learning – 30 min - 3 Days in a Week**



# TA'S SEES I AND II

ON-CAMPUS - DISTANCE LEARNING

7.20 AM - LOG IN

12:00 PM - LOG OUT

TIME	DURATION	ACTIVITY
7.30 am - 7.45 am	15 minutes	Morning Huddle
7.45 am - 8.30 am	45 minutes	Learning Activity 1
8.30 am - 8.45 am	15 minutes	Sanitization Break
8.45 am - 9.30 am	45 minutes	Learning Activity 2
9.30 am - 9.50 am	20 minutes	Snack Break
9.50 am - 10.35 am	45 minutes	Learning Activity 3
10.35 am - 10.45 am	10 minutes	Sanitization Break
10.45 am - 11.30 am	45 minutes	Learning Activity 4
11.30 am - 11.45 am	15 minutes	Snack Break
11.45 am - 12.30 am	45 minutes	Learning Activity 5

APPENDIX 1 - TABLE 2B

**Asynchronous Learning – 30 min - 3 Days in a Week (@ home via TEAMS recording)**

# TA'S SEES III - VII

ON-CAMPUS - DISTANCE LEARNING

7.20 AM - LOG IN

12:00 PM - LOG OUT

TIME	DURATION	ACTIVITY
7.30 am - 7.45 am	15 minutes	Morning Huddle
7.45 am - 8.30 am	45 minutes	Learning Activity 1
8.30 am - 8.45 am	15 minutes	Sanitization Break
8.45 am - 9.30 am	45 minutes	Learning Activity 2
9.30 am - 9.50 am	20 minutes	Snack Break
9.50 am - 10.35 am	45 minutes	Learning Activity 3
10.35 am - 10.45 am	10 minutes	Sanitization Break
10.45 am - 11.30 am	45 minutes	Learning Activity 4
11.30 am - 11.45 am	15 minutes	Snack Break
11.45 am - 12.30 am	45 minutes	Learning Activity 5

**Additional Synchronous Distance Learning - 2 Days in a Week (@ home via TEAMS)**

**2:15 pm - 3:00 pm - 45 minutes - Learning Activity 6**

**Asynchronous Learning – 30 min - 3 Days in a Week (@ home via Teams Recordings)**